

## Welcome to the Providence Breast Centre

The Providence Breast Centre (PBC) offers a multidisciplinary approach to breast diseases. We are committed to providing quality care while developing personalized treatment plans from diagnosis to post-operative care. We understand the stress associated with abnormalities detected in the breast and strive to be there for you and your family throughout every step in the diagnosis and treatment of your breast condition.

PBC is comprised of a team of breast surgeons, general practitioners, nurse navigators, medical office clerks, radiologists, pathologists, plastic surgeons, and other members of the healthcare team. We also work very closely with BC Cancer for those who require additional treatments for their breast disease.

**What we provide at PBC:** Often, but not always, the first portion of multi-step breast care is surgery which will be provided at Mount Saint Joseph's Hospital (MSJ). MSJ does not provide radiation or chemotherapy treatments. For patients with breast cancer, you will be referred to BC Cancer for additional treatments.

### Your Appointment at PBC:

- Please arrive 15 minutes early, earlier if you need to complete forms.
- Please attend all appointments (including imaging and biopsies).
- If changes to appointments must be made, please notify the clinic as soon as possible. This allows us to assign the time to other patients.
- If you would like family members to be present at your initial consultation, please limit to two people and inform us at the beginning of the appointment.
- If you do not speak or understand English proficiently, please bring someone who is able to translate for you. In exceptional circumstances we might be able to find an interpreter through the hospital.
- What to expect during your appointment:
  - Initial consultation: 30 minutes; follow-up visits: 15minutes
  - Review condition, tests leading up to visit, and other medical history
  - Perform a physical examination
  - Develop an individualized treatment plan
  - Please note also:
    - o Photographs may be taken for surgical planning and clinical records
    - o Recording is not permitted due to confidentiality reasons
    - o Results will not be provided over the phone
    - o While we aim to be punctual with our appointments, unexpected circumstances can occur. This may mean you have to wait longer than we would like.

*Nurse Navigators:* Following your initial consultation with the surgeon, you may meet with a nurse navigator to review the details of your treatment plan. This meeting is approximately 15minutes. Please contact the nurse navigator should you have further questions after you have left the clinic.

**Consent Forms:** As part of standard care, you will be asked to sign consent forms. Patients are not allowed to alter the consent forms as this will render the form invalid.

**Second Opinions:** Second opinions are generally not accepted within the group of surgeons at PBC. Scheduling second opinions increases wait times for other patients. However, surgeons frequently discuss complex cases as a multidisciplinary conference or in a group discussion amongst all surgeons.

**Your Surgery:** If it is decided that surgery is needed and consent is signed, you will be given a tentative surgery date. The surgery date may be further away than you had anticipated. The surgery date is based on the urgency of your situation and operating room availability. Your surgery day may change due to unforeseen circumstances. You will receive a phone call as soon as the change is made. The time of surgery and other details relating to your surgery will be confirmed with you over the phone **one day before your surgery**.

**Follow Up:** You will be scheduled for a follow-up appointment with your surgeon approximately two weeks after your surgery to review the findings from the surgery and your recovery. From there, your care will be transferred to BC Cancer (if necessary) or back to your family physician for ongoing follow-up. If you do not have a family doctor, we ask that patients find a general practitioner, multi-physician clinic, or nurse practitioner to coordinate long-term follow-up needs.

**Teaching and Association with the University of British Columbia:** PBC is a teaching facility associated with the University of British Columbia. Medical students and residents are members of our team. They may be involved in your care and are carefully supervised by the attending surgeon.

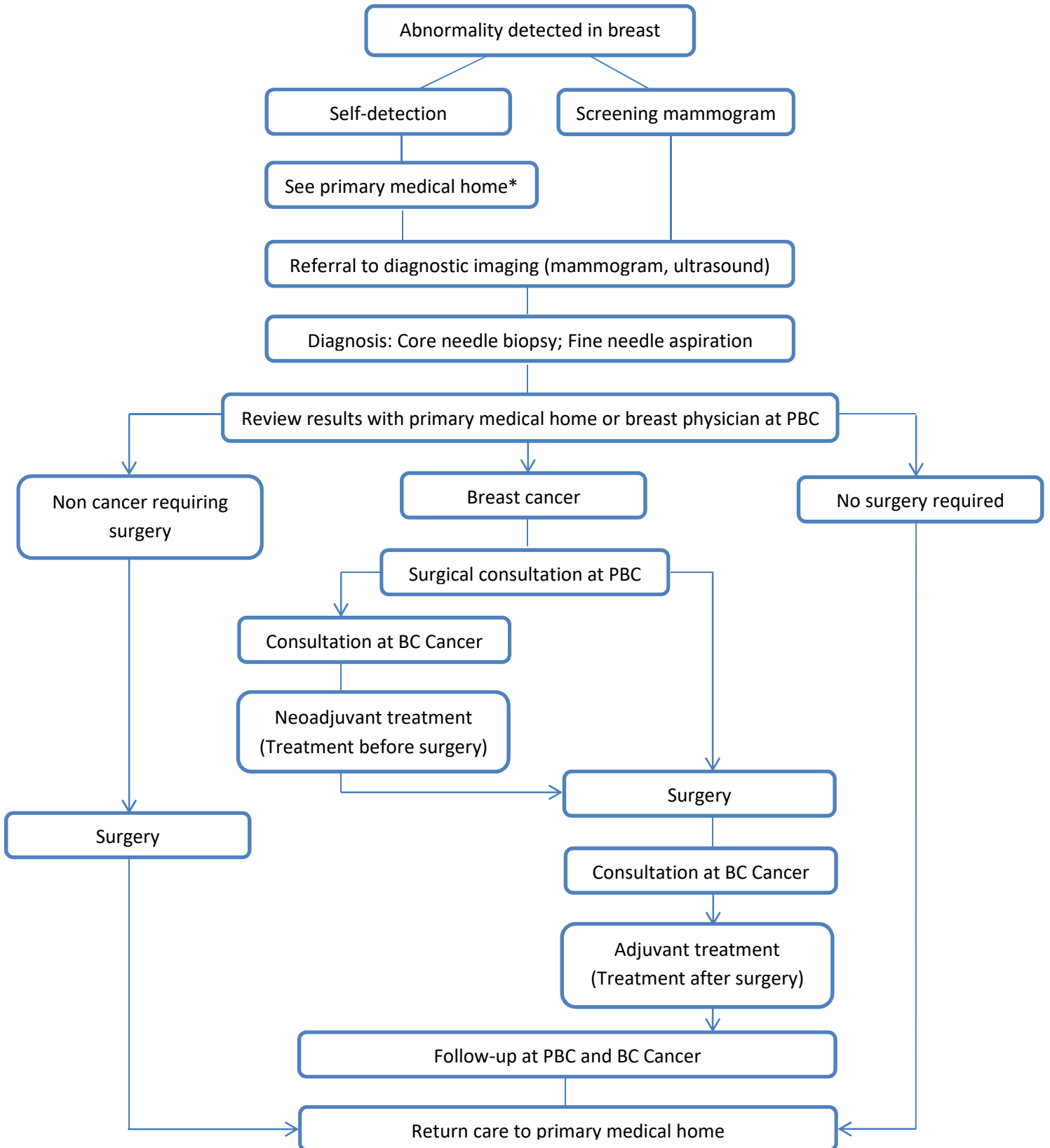
**Research:** Research is an important aspect of our work at PBC and you may be given the opportunity to participate in a variety of research studies. Participation is always voluntary. Research is important to improve breast care in the future but may also have a direct benefit to your situation, depending on the study.

**Other Treatments for Breast Cancer:** Although we are well educated about all treatments involved in breast cancer, specifics regarding you individualized adjuvant treatments (those in addition to surgery) will not occur until you are seen at BC Cancer, usually after your surgery.

**Referral:** PBC operates on a central referral basis in accordance with best practice for breast cancer in order to minimize time to surgery. All referrals are triaged with this in mind. Although you may have been referred to see a particular surgeon, if that surgeon cannot offer you optimal surgery timing you will be offered the chance to see another surgeon with a shorter surgical wait list.

We strive to provide you with a positive encounter during what is often a very stressful time. Our team is here to answer your questions and provide clarity to you and your family in regards to your breast condition.

**Typical Breast Management Plan**



\*Primary medical home: your most responsible care provider (family doctor, multidocor clinic, or nurse practitioner)